



Special Features

- Elegantly designed for good aesthetics and made out of SS 304 for long life.
- Easy to fit.
- Ideal kitchen accessories to store Plates & Glasses.

Specifications

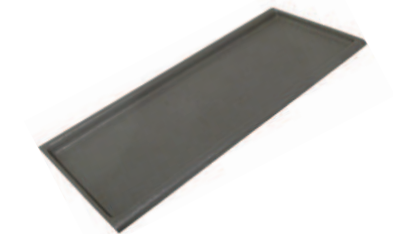
Items	Code Nos.	Size in mm			Internal Cabinet Width 'X'
		Width	Depth	Height	
Plate Rack	PR 22-10	559	255	81	564
	PR 24-10	595	255	81	600
	PR 28-10	705	255	81	710
	PR 30-10	755	255	81	760
	PR 34-10	855	255	81	860
Glass Rack	GR 22-10	559	255	47	564
	GR 24-10	595	255	47	600
	GR 28-10	705	255	47	710
	GR 30-10	755	255	47	760
	GR 34-10	855	255	47	860
Drip Tray (w/o Rod Support & Anchors)	DT 22-10E	534	243	22	550
	DT 24-10E	570	243	22	600
	DT 28-10E	680	243	22	710
	DT 30-10E	730	243	22	760
	DT 34-10E	830	243	22	860



Kitchen Plate Rack



Glass Rack



Drip Tray

Fitting Instructions

1. Choose a suitable cabinet according to the specification of particular products (Fig. 1).
2. Fix the hanger to the side board of the cabinet as shown in Fig. 2.
3. Sizes 275 & 315 (shown in Fig. 2) are for reference only, sizes may vary depending on the height of cabinet.
4. Hang the racks as shown in Fig. 3.

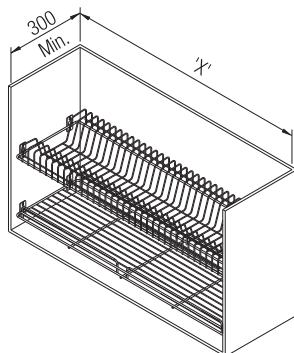


Fig. 1

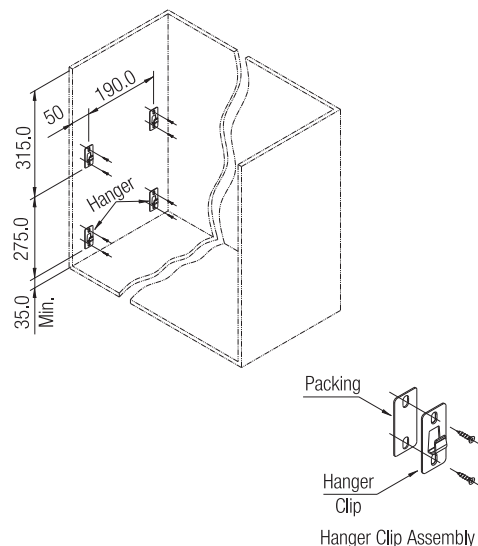


Fig. 2

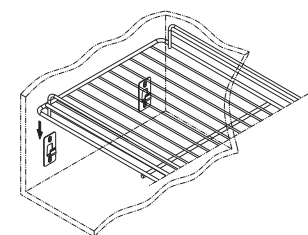


Fig. 3